

STANDARD FEATURES

CREEKSIDE MANOR STANDARDS

CONSTRUCTION

- 8' Flat Ceiling Throughout
- 12" Eaves Hitch End Only
- 20# Roof Load
- 2x4 Exterior Walls
- 2x6 Floor Joists 16" on Center
- 3/12 Roof Pitch
- 5/8" Tongue & Groove Floor Decking
- 6" Eaves Sides & Rear - 28' & 40' Wides Only
- Nominal Eaves Sides & Rear - All Except 28' & 40' Wides
- R-11 Floor Insulation
- R-13 Wall Insulation
- R-22 Ceiling Insulation

EXTERIOR

- 32" In-swing 6-Panel Rear Door
- 36" In-swing Steel Front Door
- 4" Cemplank® Window Trim Throughout
- Cemplank® Facia
- Cemplank® Perforated Soffit
- Cemplank® Vertical Siding
- Class A Shingles
- Low "E" Dual Glaze Windows Throughout
- Shutters Hitch & Front Door Side - Single Wides Only
- Standard Front & Rear Porch Lights

PLUMBING/HEATING/ELECTRICAL/UTILITY

- 100 AMP Electrical Service
- 30 Gallon Electric Water Heater
- Carbon Monoxide & Smoke Detectors
- Cemplank® Water Heater Door with Hinges
- Exterior GFI Receptacle
- Gas Forced Air Furnace
- Shutoff Valves Throughout
- Surface Mount Ceiling Lights Throughout
- Wire Shelf Over Washer & Dryer
- Wire & Vent for Electric Dryer

INTERIOR

- #4 Rebond Carpet Pad
- 3" Baseboard Molding in Wet Areas Only
- 6-Panel Interior Doors
- Brushed Nickel Lighting & Hardware Throughout
- Carpet in Closets Throughout
- Linoleum in Kitchen, Dining, Baths & Utility
- Simply Stated Carpet
- Standard Heat Registers Throughout
- T&T Throughout with Rounded Corners
- Wire Vented Shelving Throughout
- White 2-1/4" Door Case Molding

KITCHEN

- Granite Counters with Single Eased Edge
- 4" Granite Backsplash
- Stainless Steel Under-Mount Sink
- Lined Overhead Cabinets
- Brushed Nickel Faucet
- Bank of Drawers
- Flat Panel MDF Cabinet Doors
- Shelf Over Refrigerator

APPLIANCES

- 18 CF Frost Free Refrigerator
- 30" Vented Range Hood with Light
- Deluxe Gas Range

BATHS

- Granite Counters with Single Eased Edge
- 4" Granite Backsplash
- Under-Mount Bath Sinks
- Brushed Nickel Faucets & Hardware
- 60" 2-Piece Tub & Shower Combo

UPGRADE PACKAGES

MEADOWVIEW ESTATES PACKAGE

(INCLUDES CREEKSIDE MANOR STANDARDS)

- 1-Piece Fiberglass Tub Showers
- 3" Baseboard Molding Throughout
- 32" 9-Light Cottage Rear Door
- 40 Gallon Gas Water Heater
- 5 Recessed Can Lights in Kitchen
- Adjustable Overhead Shelves
- Cabinet Over Refrigerator
- Deluxe 5-Drum Dining Room Chandelier
- Deluxe Cabinet Molding
- Deluxe Front Porch Light
- Deluxe Window Trim - Hitch & Front Door Side
- Elongated Toilets
- Finished Base Cabinet Interiors
- Hardwood Flat Panel Cabinet Doors
- Lighting Over Bathroom Mirrors
- Metal Mini-Blinds Throughout
- Satin Nickel Lever Passage Door Handles
- Satin Nickel Single Lever Faucets Throughout
- Semi-Surface Mount Ceiling Lights Throughout
- Toe-Kick Heat Registers in Wet Areas
- Window Valances - Factory Select Per Print
- Wood Trim Around Bath Mirrors

NAPA ESTATES PACKAGE

(INCLUDES MEADOWVIEW ESTATES STANDARDS)

- 9' Flat Ceiling Throughout
- #6 Rebond Carpet Pad
- 11x36 Slider Window in Master & Guest Baths
- 2" Fauxwood Blinds Throughout
- 42" Overhead Cabinets
- 80" Windows Throughout
- Cabinet Over Washer & Dryer
- Craftsman Window Trim - Hitch & Front Door Side
- Soft Sensations Carpet
- Wood Closet Rods & Shelves Throughout



840 Palm Ave | Lindsay, CA 93247 | www.redmanhomesca.com



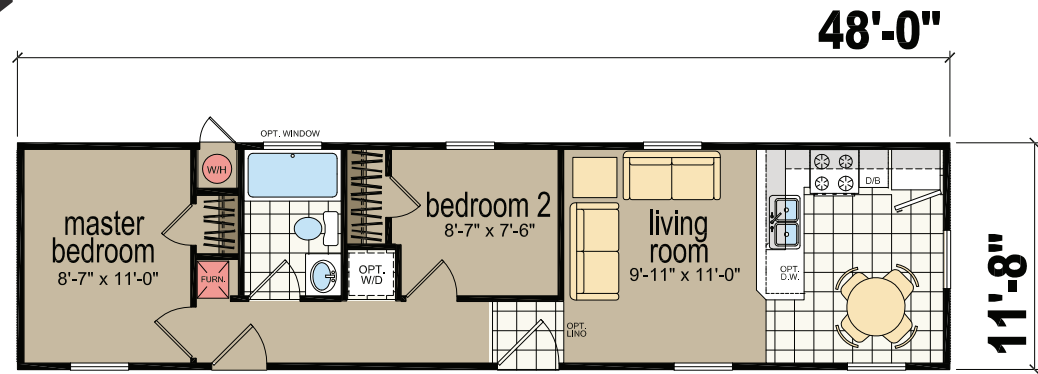
SINGLE SECTION HOMES

MODELS AVAILABLE IN CREEKSIDE MANOR, MEADOWVIEW ESTATES OR NAPA ESTATES PACKAGES.



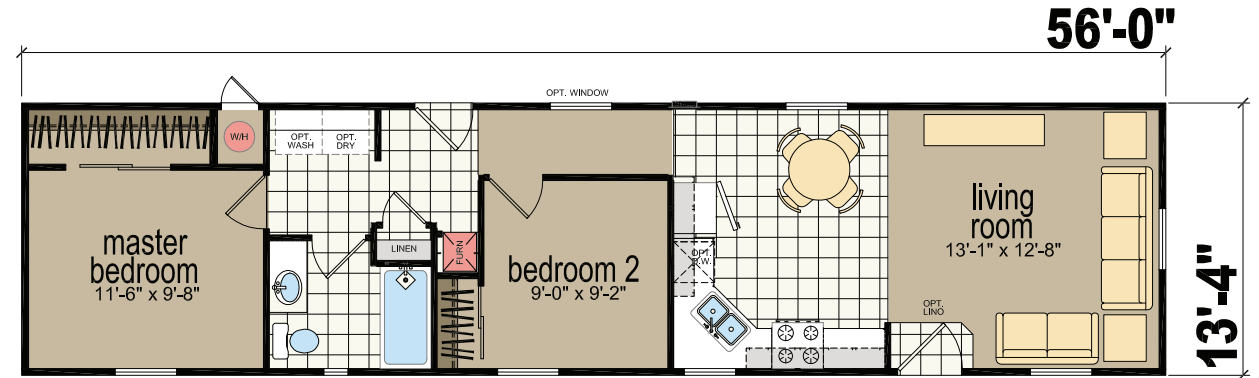
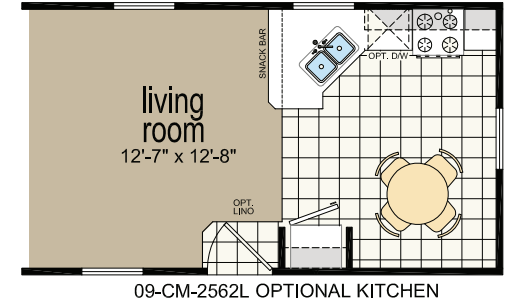
MODEL 1482D

2 BED- 1 BATH | 560 SQ.FT.



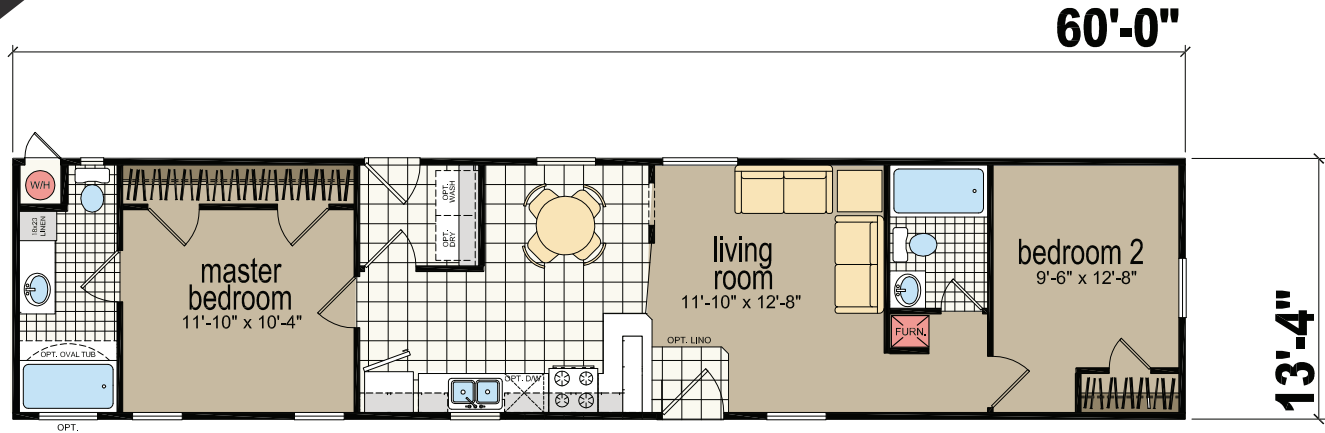
MODEL 2562L

2 BED- 1 BATH | 747 SQ.FT.



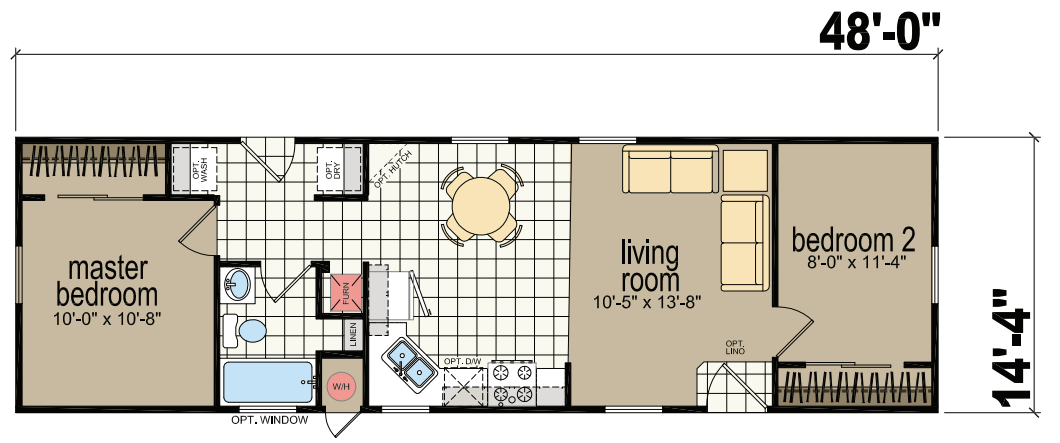
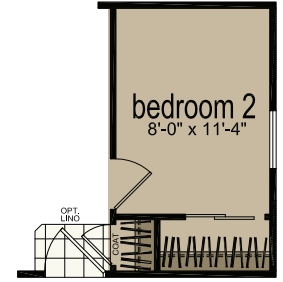
MODEL 2602B

2 BED- 2 BATH | 800 SQ.FT.



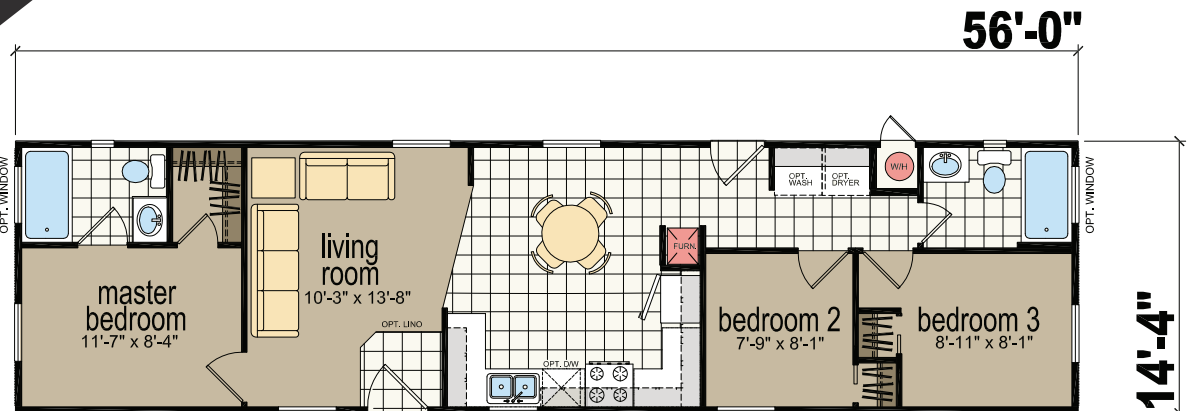
MODEL 6482B

2 BED- 1 BATH | 688 SQ.FT.



MODEL 6563B

3 BED- 2 BATH | 803 SQ.FT.



Due to continuous product development and improvement, prices, specifications and material are subject to change without notice or obligation. Square footage and other dimensions are approximate. Included images are artist renderings and are not intended to be an accurate representation of the homes. Renderings and Floor Plans may be shown with optional features and / or third party additions that may not be available in all regions or situations. Exterior Renderings may include onsite builder built options not offered by Champion Home Builders, Inc.