



COMMUNITY HOMES

REDMAN  HOMES.®

BUILDING THE BEST

We build each and every home to meet or exceed a strict national or state building code, and we set even higher standards for ourselves. Focusing on the things you don't see as well as the things you do, we monitor and inspect our homes at every stage of construction. From the plumbing system to the electrical wiring, from the kitchen cabinets to the closets in the bedrooms – every home we build undergoes rigorous quality inspections to ensure we're providing you with nothing but our best.



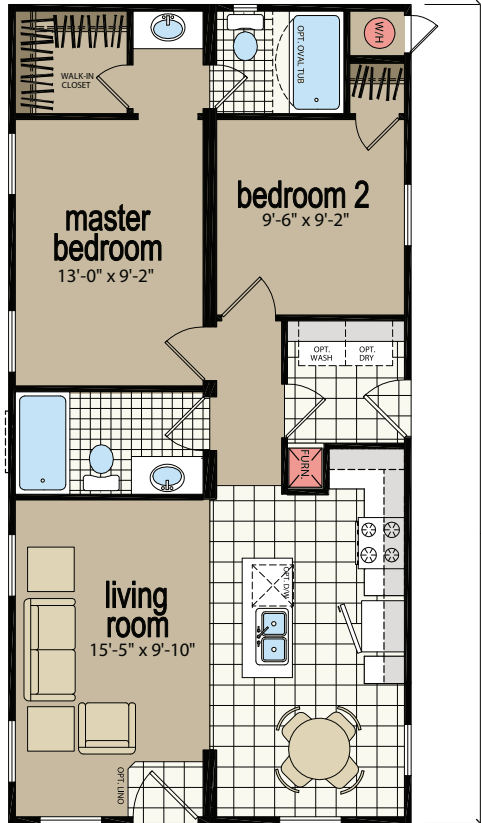
Over the years, we've built more than just homes. We've built homebuyer trust in our ability to satisfy their needs and we're confident we can provide you with a home that will meet your needs and exceed your expectations.



8402D

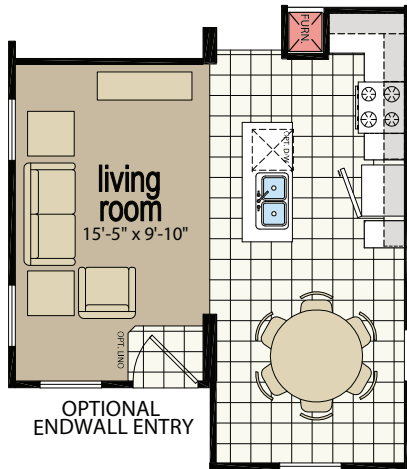
2 BED - 2 BATH
787 SQ.FT.

19'-8"



OPTIONAL
ENDWALL ENTRY

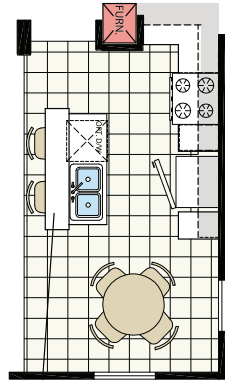
40'-0"



OPTIONAL
ENDWALL ENTRY

OPTIONAL OFFSET

44'-0"

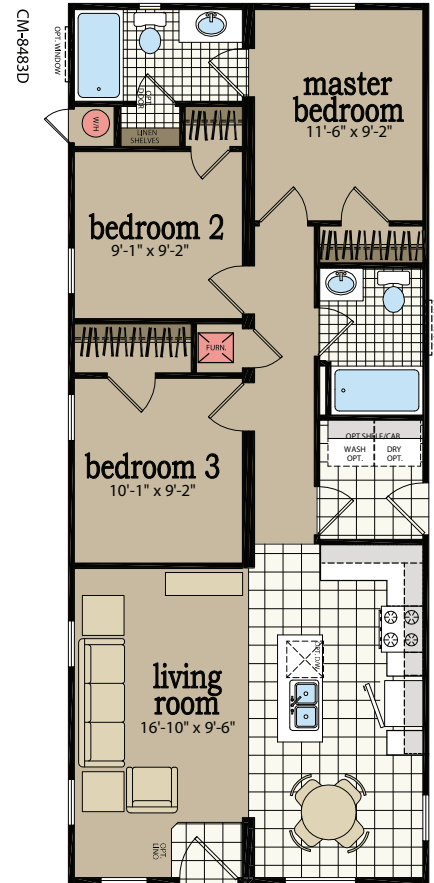


LOW WALL @ 42" WITH BAR TOP
OPTIONAL ISLAND

8483D

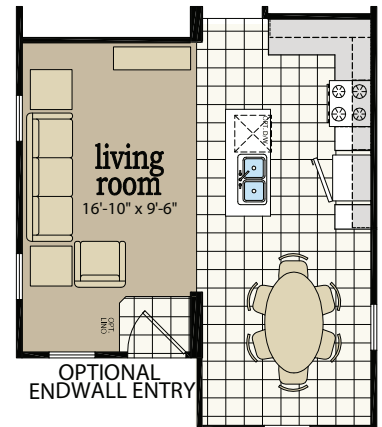
3 BED - 2 BATH
944 SQ.FT.

19'-8"



OPTIONAL
ENDWALL ENTRY

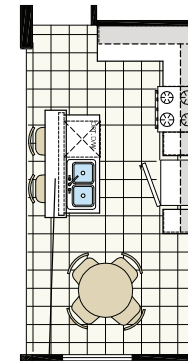
48'-0"



OPTIONAL
ENDWALL ENTRY

OPTIONAL OFFSET

52'-0"

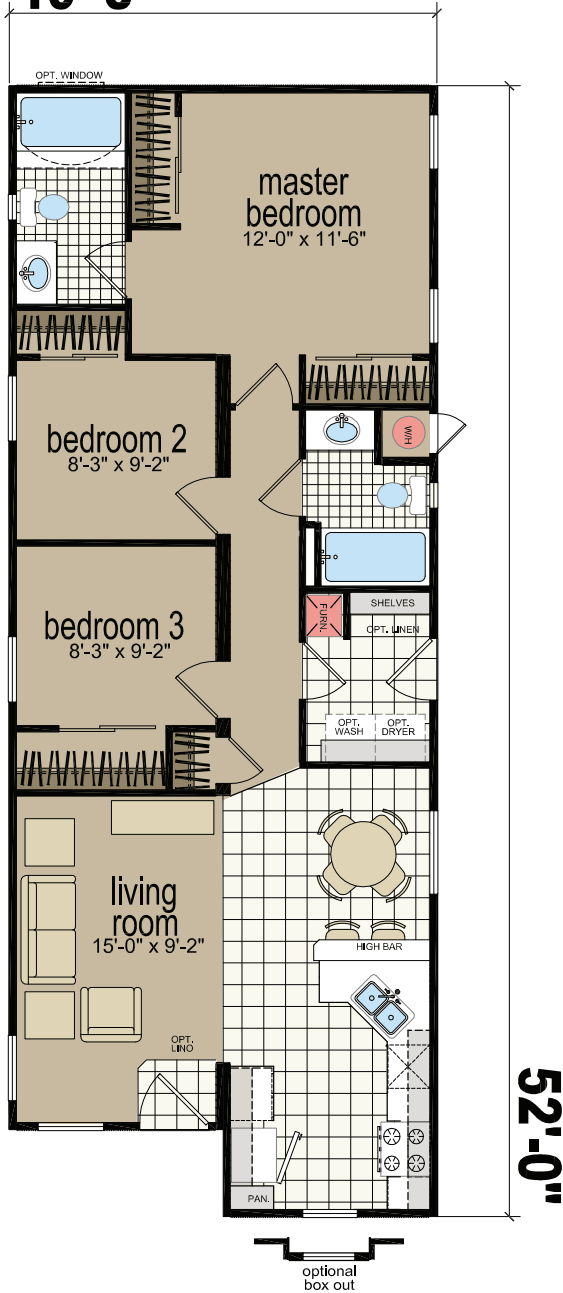


LOW WALL @ 42" WITH BAR TOP
OPTIONAL ISLAND

8523K

3 BED - 2 BATH
983 SQ.FT.

19'-8"

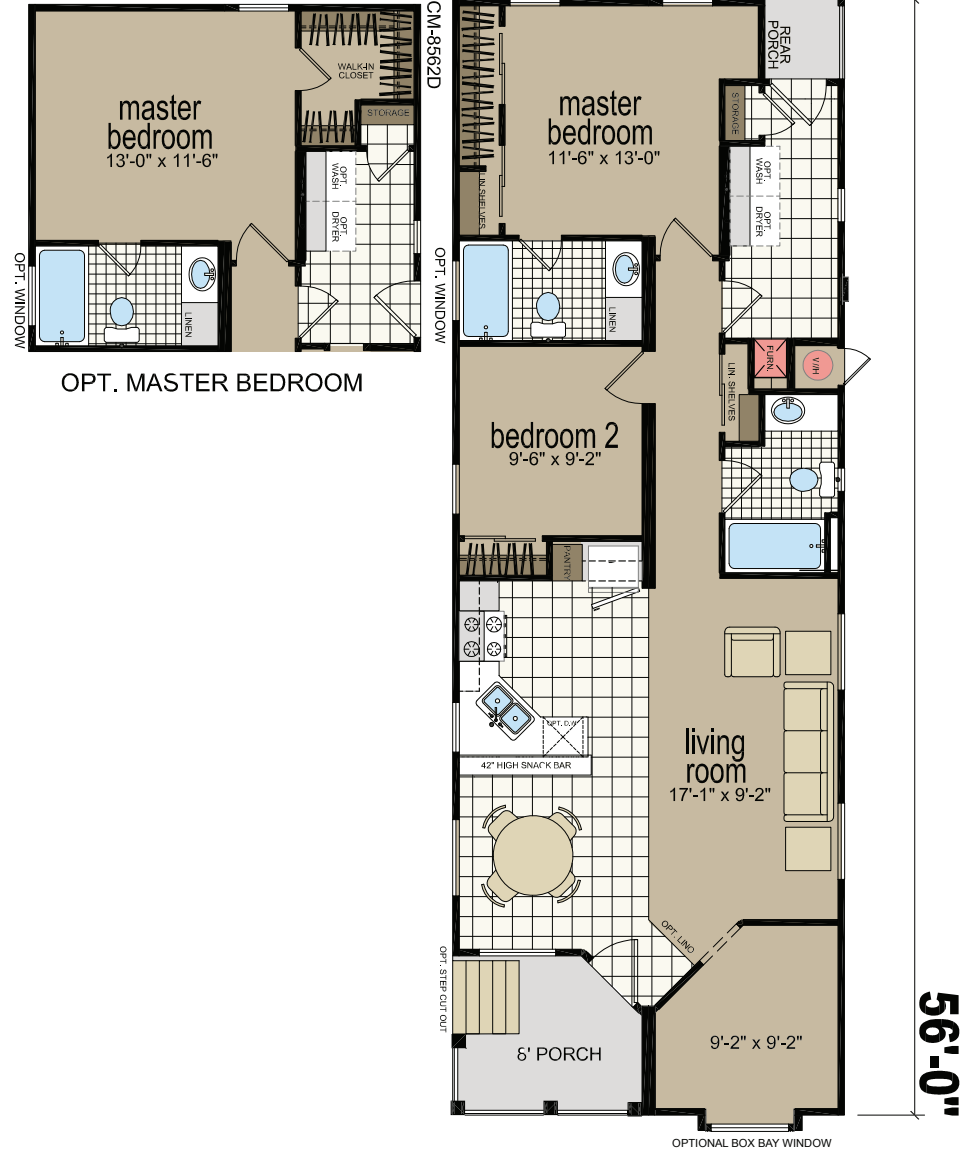


52'-0"

8562D

2 BED - 2 BATH
1018 SQ.FT.

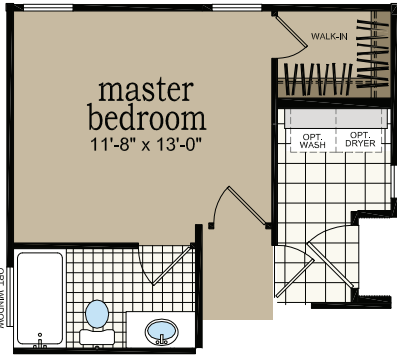
19'-8"



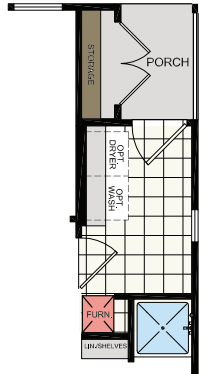
56'-0"

8603D

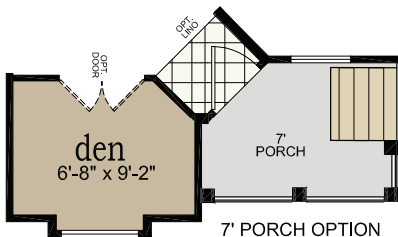
3 BED - 2 BATH
1095 SQ.FT.



OPT. UTILITY W./ RECESS ENTRY

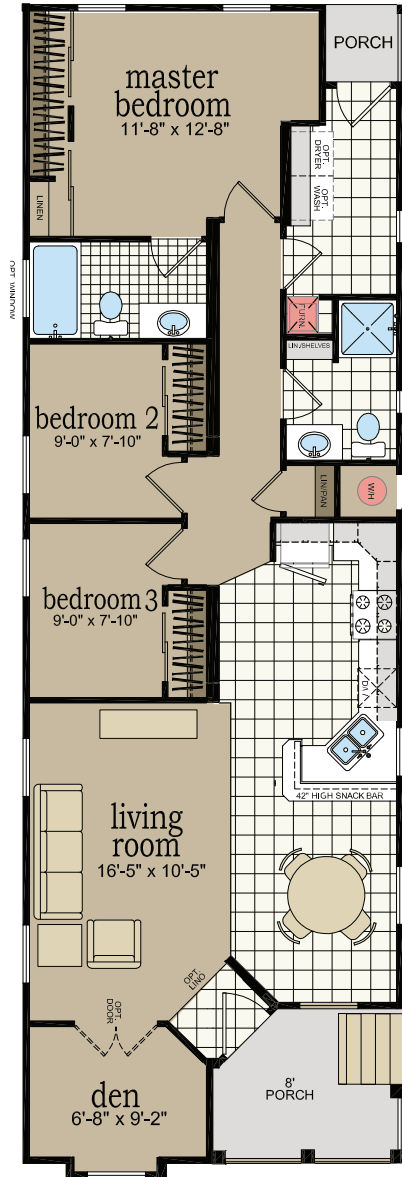


OPT. EXTERIOR STORAGE



OPTIONAL BOX BAY WINDOW
OPTIONAL OFFSET

19'-8"



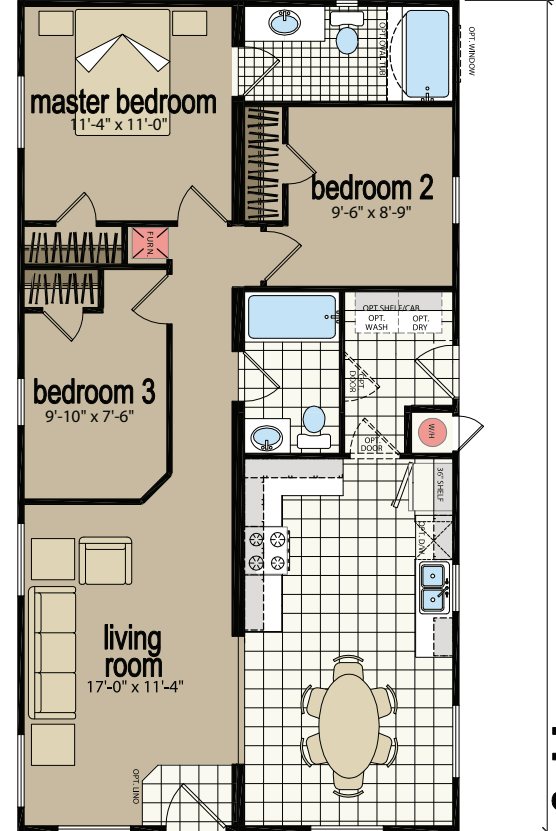
OPTIONAL BOX BAY WINDOW

59'-0"

3443L

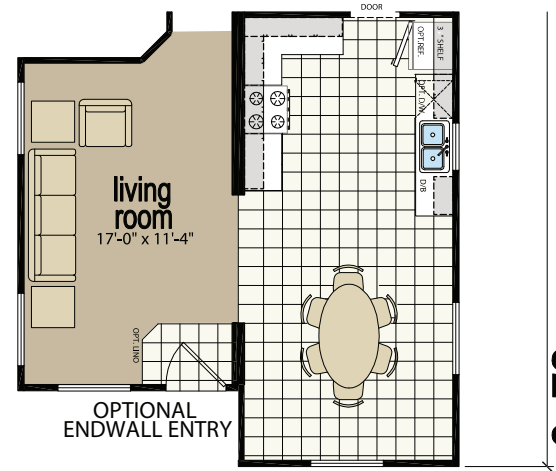
3 BED - 2 BATH
1027 SQ.FT.

CM-3443L



OPTIONAL ENDWALL ENTRY

44'-0"



OPTIONAL ENDWALL ENTRY

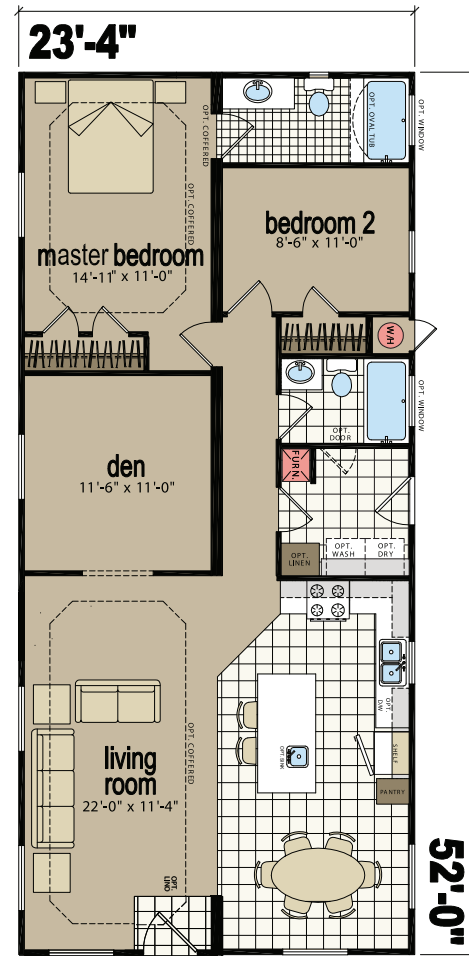
OPTIONAL OFFSET

52'-0"

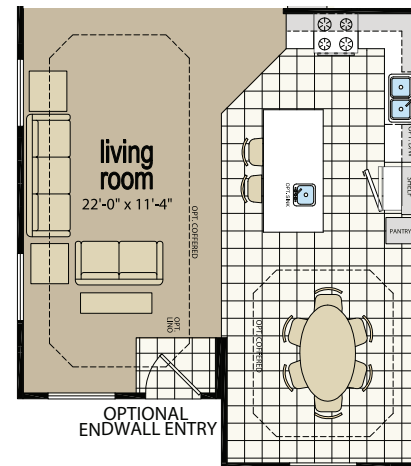
60'-0"

3522D

2 BED- 2 BATH
1213 SQ.FT.



OPTIONAL
ENDWALL ENTRY



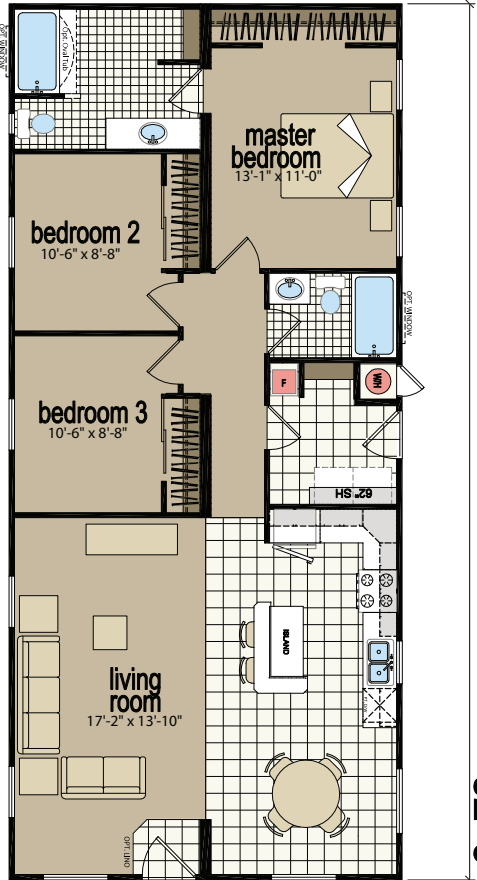
OPTIONAL
ENDWALL ENTRY

OPTIONAL OFFSET

3523L

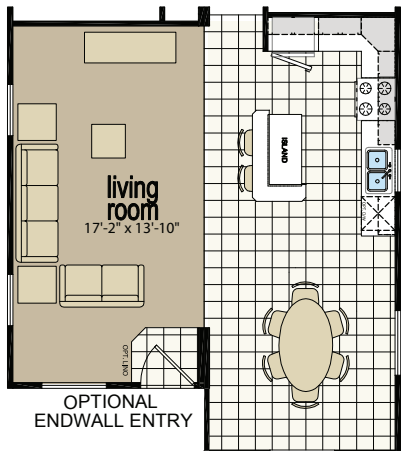
3 BED - 2 BATH
1213 SQ.FT.

23'-4"



OPTIONAL ENDWALL ENTRY

52'-0"



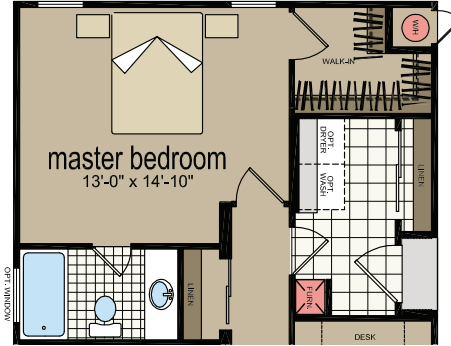
OPTIONAL
ENDWALL ENTRY

OPTIONAL OFFSET

56'-0"

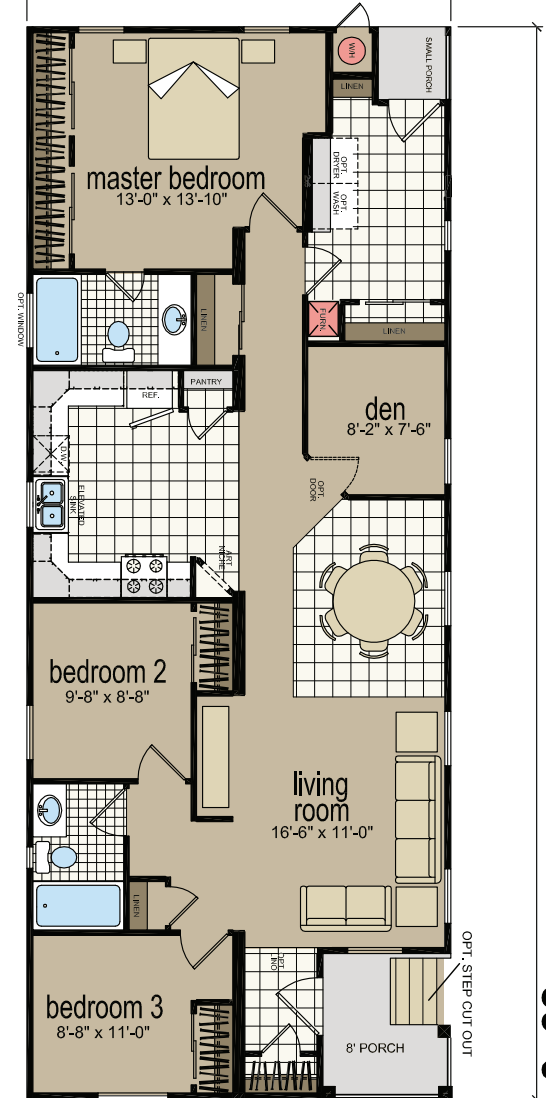
3593B

3 BED - 2 BATH
1304 SQ.FT.



OPT. UTILITY W/RECESS ENTRY

23'-4"



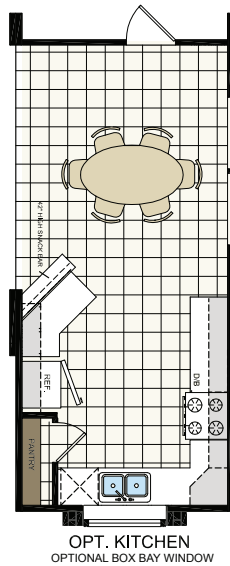
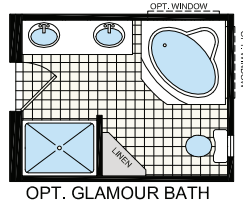
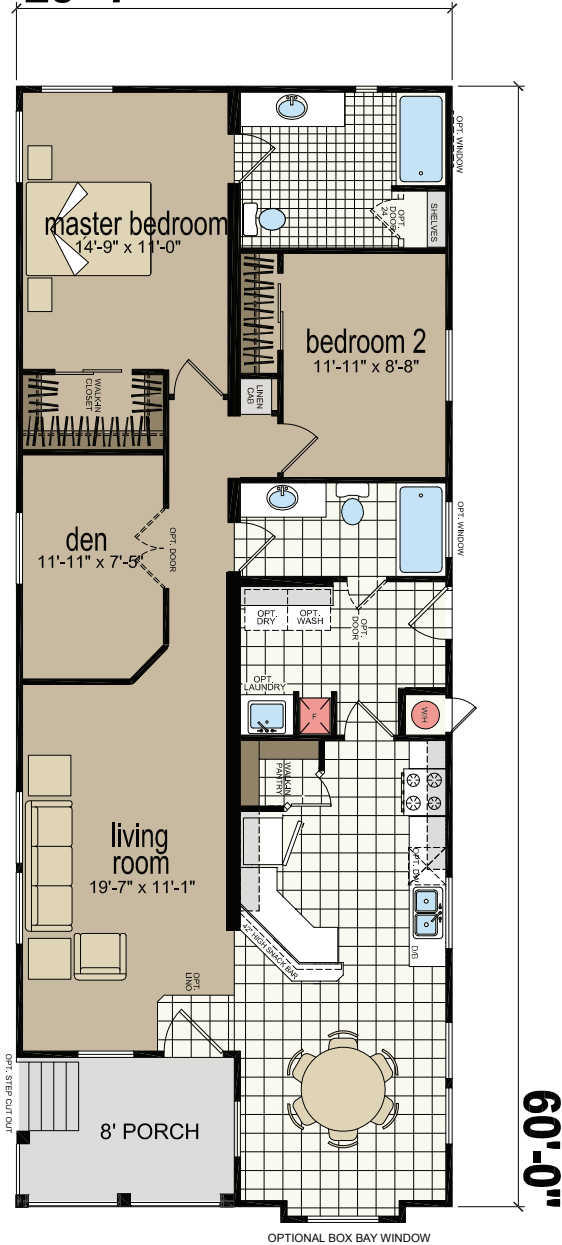
OPT. STEP CUT OUT

59'-0"

3602L

2 BED - 2 BATH
1312 SQ.FT.

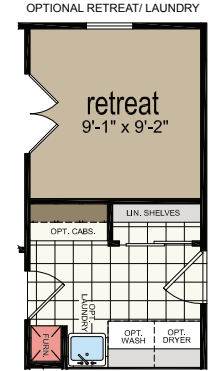
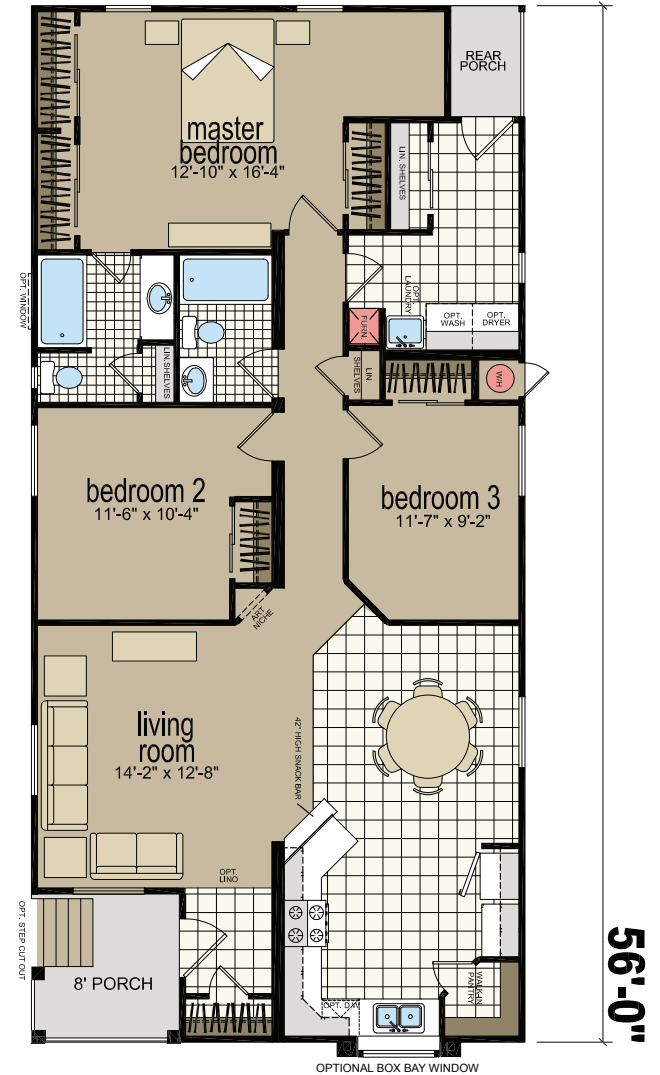
23'-4"



4563K

3 BED - 2 BATH
1410 SQ.FT.

26'-8"

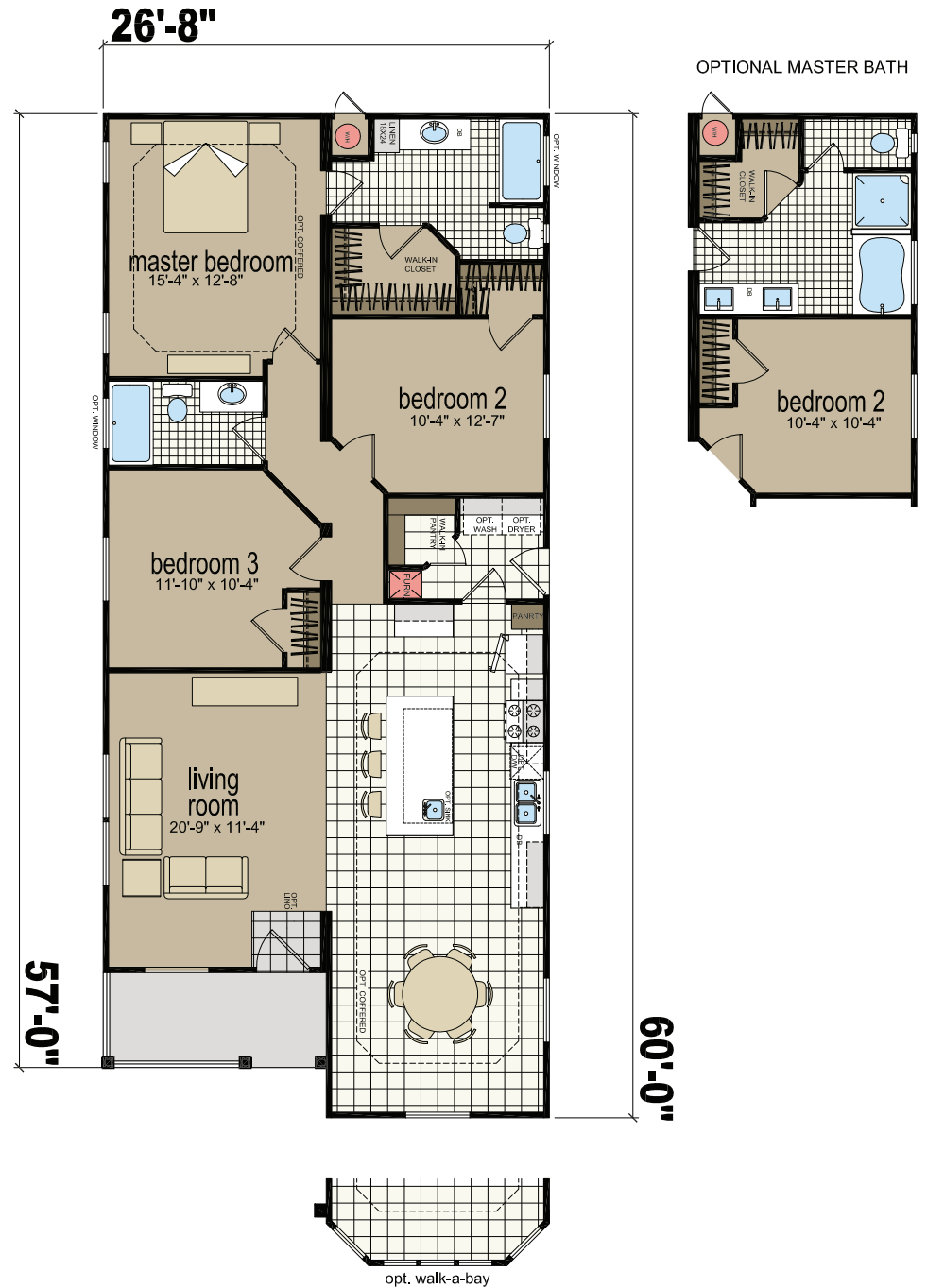


4603D

3 BED - 2 BATH
1478 SQ.FT.



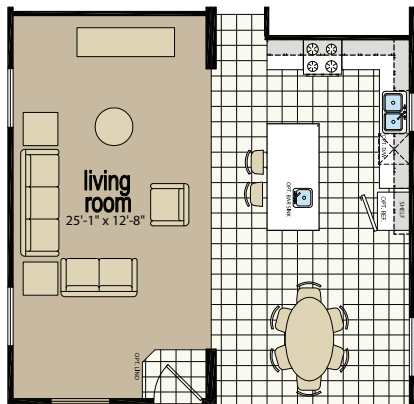
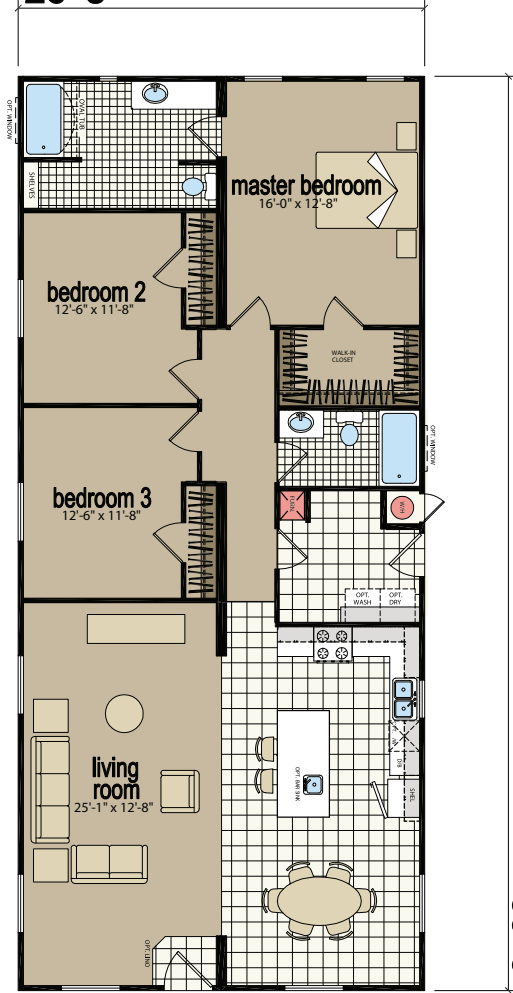
SHOWN WITH OPTIONAL EXTERIOR ELEVATION



4603L

3 BED - 2 BATH
1600 SQ.FT.

26'-8"



OPTIONAL
ENDWALL ENTRY

OPTIONAL OFFSET

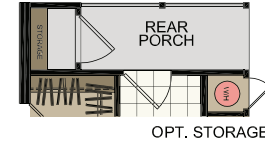
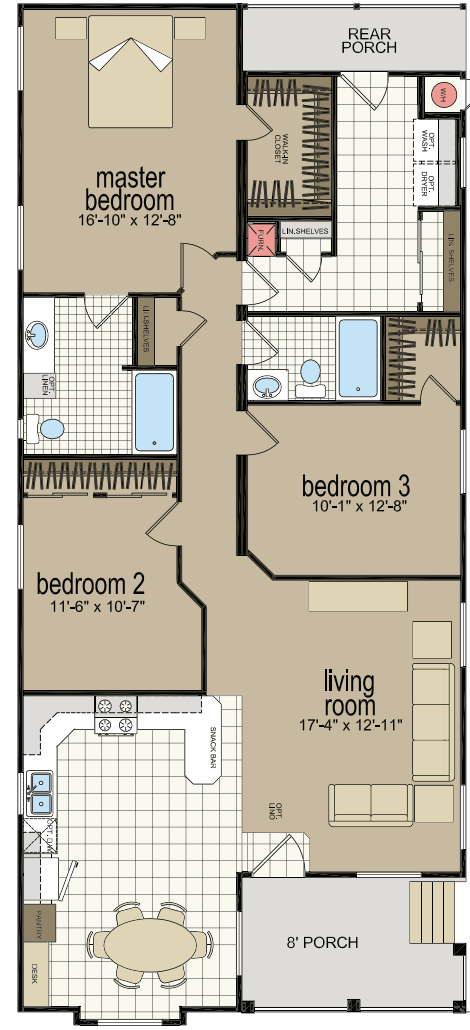
60'-0"

64'-0"

4603M

3 BED - 2 BATH
1445 SQ.FT.

26'-8"



60'-0"

STANDARDS

CREEKSIDE MANOR STANDARDS

CONSTRUCTION

- 8' Flat Ceiling Throughout
- 12" Eaves Hitch End Only
- 20# Roof Load
- 2x4 Exterior Walls
- 2x6 Floor Joists 16" on Center
- 3/12 Roof Pitch
- 5/8" Tongue & Groove Floor Decking
- 6" Eaves Sides & Rear - 28' & 40' Wides Only
- Nominal Eaves Sides & Rear - All Except 28' & 40' Wides
- R-11 Floor Insulation
- R-13 Wall Insulation
- R-22 Ceiling Insulation

EXTERIOR

- 32" In-swing 6-Panel Rear Door
- 36" In-swing Steel Front Door
- 4" Cemplank® Window Trim Throughout
- Cemplank® Facia
- Cemplank® Perforated Soffit
- Cemplank® Vertical Siding
- Class A Shingles
- Low "E" Dual Glaze Windows Throughout
- Shutters Hitch & Front Door Side - Single Wides Only
- Standard Front & Rear Porch Lights

PLUMBING/HEATING/ELECTRICAL/UTILITY

- 100 AMP Electrical Service
- 30 Gallon Electric Water Heater
- Carbon Monoxide & Smoke Detectors
- Cemplank® Water Heater Door with Hinges
- Exterior GFI Receptacle
- Gas Forced Air Furnace
- Shutoff Valves Throughout
- Surface Mount Ceiling Lights Throughout
- Wire Shelf Over Washer & Dryer
- Wire & Vent for Electric Dryer

INTERIOR

- #4 Rebond Carpet Pad
- 3" Baseboard Molding in Wet Areas Only
- 6-Panel Interior Doors
- Brushed Nickel Lighting & Hardware Throughout
- Carpet in Closets Throughout
- Linoleum in Kitchen, Dining, Baths & Utility
- Simply Stated Carpet
- Standard Heat Registers Throughout
- T&T Throughout with Rounded Corners
- Wire Vented Shelving Throughout
- White 2-1/4" Door Case Molding

KITCHEN

- Granite Counters with Single Eased Edge
- 4" Granite Backsplash
- Stainless Steel Under-Mount Sink
- Lined Overhead Cabinets
- Brushed Nickel Faucet
- Bank of Drawers
- Flat Panel MDF Cabinet Doors
- Shelf Over Refrigerator

APPLIANCES

- 18 CF Frost Free Refrigerator
- 30" Vented Range Hood with Light
- Deluxe Gas Range

BATHS

- Granite Counters with Single Eased Edge
- 4" Granite Backsplash
- Under-Mount Bath Sinks
- Brushed Nickel Faucets & Hardware
- 60" 2-Piece Tub & Shower Combo

UPGRADE PACKAGE

MEADOWVIEW ESTATES PACKAGE

(INCLUDES CREEKSIDE MANOR STANDARDS)

- 1-Piece Fiberglass Tub Showers
- 3" Baseboard Molding Throughout
- 32" 9-Light Cottage Rear Door
- 40 Gallon Gas Water Heater
- 5 Recessed Can Lights in Kitchen
- Adjustable Overhead Shelves
- Cabinet Over Refrigerator
- Deluxe 5-Drum Dining Room Chandelier
- Deluxe Cabinet Molding
- Deluxe Front Porch Light
- Deluxe Window Trim - Hitch & Front Door Side
- Elongated Toilets
- Finished Base Cabinet Interiors
- Hardwood Flat Panel Cabinet Doors
- Lighting Over Bathroom Mirrors
- Metal Mini-Blinds Throughout
- Satin Nickel Lever Passage Door Handles
- Satin Nickel Single Lever Faucets Throughout
- Semi-Surface Mount Ceiling Lights Throughout
- Toe-Kick Heat Registers in Wet Areas
- Window Valances - Factory Select Per Print
- Wood Trim Around Bath Mirrors

UPGRADE PACKAGE

NAPA ESTATES PACKAGE

(INCLUDES MEADOWVIEW ESTATES PACKAGE)

- 9' Flat Ceiling Throughout
- #6 Rebond Carpet Pad
- 11x36 Slider Window in Master & Guest Baths
- 2" Fauxwood Blinds Throughout
- 42" Overhead Cabinets
- 80" Windows Throughout
- Cabinet Over Washer & Dryer
- Craftsman Window Trim - Hitch & Front Door Side
- Soft Sensations Carpet
- Wood Closet Rods & Shelves Throughout

Due to continuous product development and improvement, prices, specifications, and materials are subject to change without notice or obligation. Square footage and other dimensions are approximate. Exterior images may be artist renderings and are not intended to be an accurate representation of the home. Renderings, photos and floor plans may be shown with optional features or third-party additions.



840 Palm Ave
Lindsay, CA 93247

www.redmanhomesca.com

CHAMPION®
MANUFACTURED BEAUTIFULLY™

10155000